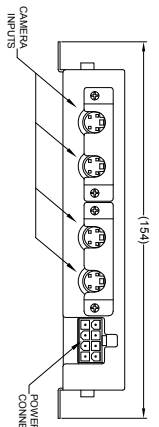
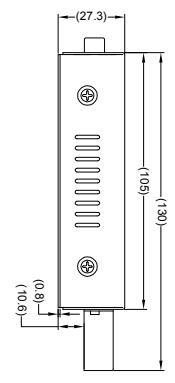
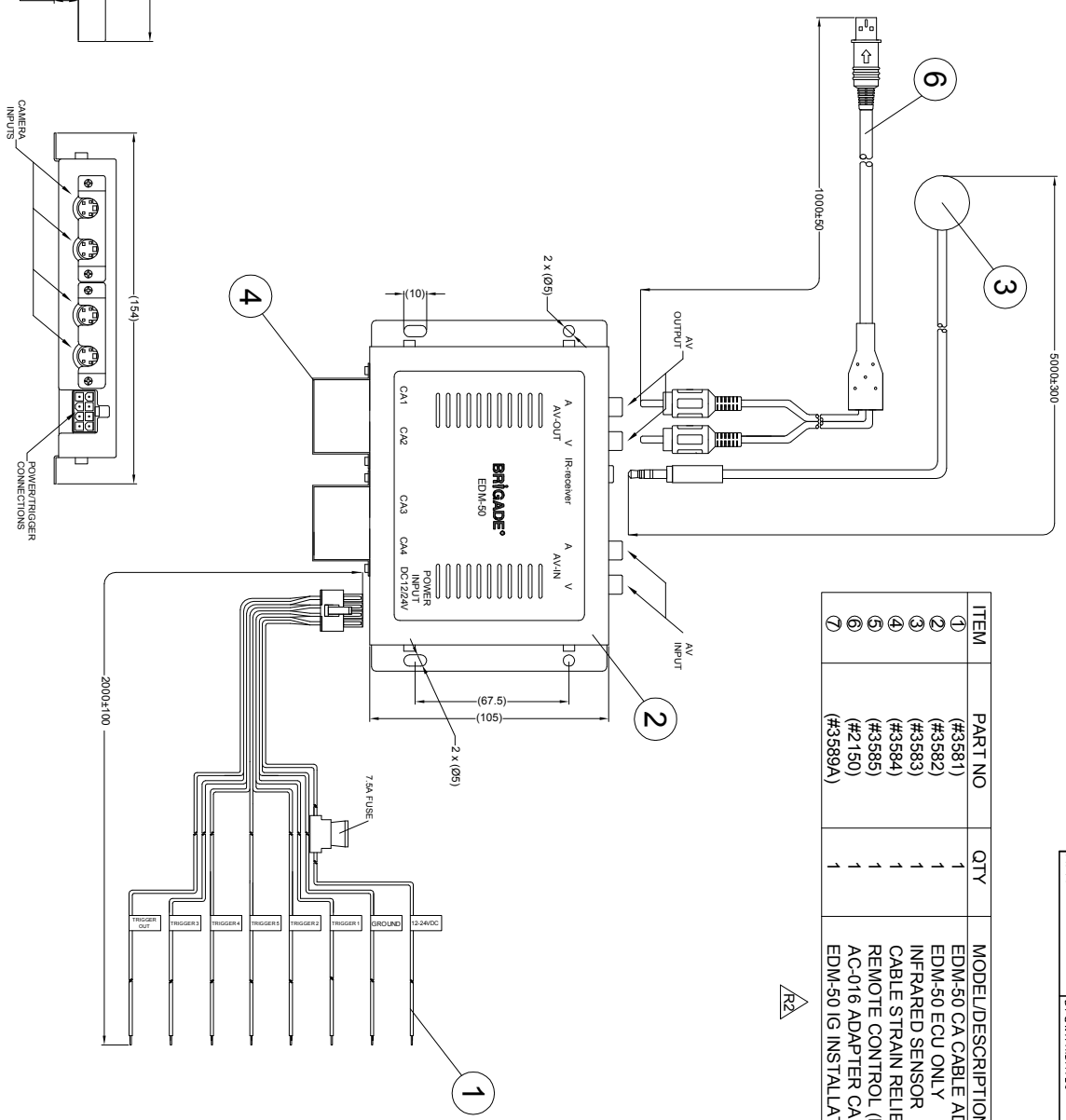


Revision Notes			
R1 - AC-016 UPDATED			
AP.A -	Drawn: KERAL	Checked: L. BRAR	Approved: D. KERAL
R2 - GIFTBOX LABEL DETAILS ADDED TO NOTES. INSTRUCTION MANUAL PART NUMBER UPDATED AS PER ECR CR-A330/A			
AP.A - T. CHOU	Drawn: BATES	Checked: B. CHILDS	Approved: B. JOHN
			Date: 02/07/15

ITEM	PART NO	QTY	MODEL/DESCRIPTION
①	(#3581)	1	EDM-50 CA CABLE ADAPTER
②	(#3582)	1	EDM-50 ECU ONLY
③	(#3583)	1	INFRARED SENSOR
④	(#3584)	1	CABLE STRAIN RELIEF BRACKETS INCLUDING SCREWS
⑤	(#3585)	1	REMOTE CONTROL (NOT SHOWN)
⑥	(#2150)	1	AC-016 ADAPTER CABLE
⑦	(#3589A)	1	EDM-50 (G) INSTALLATION GUIDE (NOT SHOWN)



- NOTES:
1. FOR INSTALLATION AND CONFIGURATION REFER TO USER MANUAL.
 2. FOR DETAILED SPECIFICATION REFER TO PRODUCT SPECIFICATION.
 3. FOR GIFTBOX LABEL DRAWING REFER TO LATEST REVISION OF DRAWING BE-002901-XX-14.

PROPRIETARY NOTICE
 THIS DESIGN AND TECHNICAL INFORMATION APPEARING ON THIS DRAWING IS THE PROPERTY OF BRIGADE ELECTRONICS, AND IS DISCLOSED IN CONFIDENCE. IT IS NOT TO BE COPIED, REPRODUCED, REVEALED TO OR EXPROPRIATED BY OTHERS, EITHER IN WHOLE OR IN PART WITHOUT THE EXPRESS WRITTEN CONSENT OF BRIGADE ELECTRONICS.

BRIGADE®
 www.brigade-electronics.com

Assembly PI Approval		Approved by		Checked by		Drawn by	
DKERAL		DKERAL		L. BRAR		M. BUTLER	
Angle of Projection		Scale		Released		Assembly Ref	
Third Angle		N/A		21/07/11		EDM-50	
Status RELEASED		Part No		2152A		BE-001391-02-10	